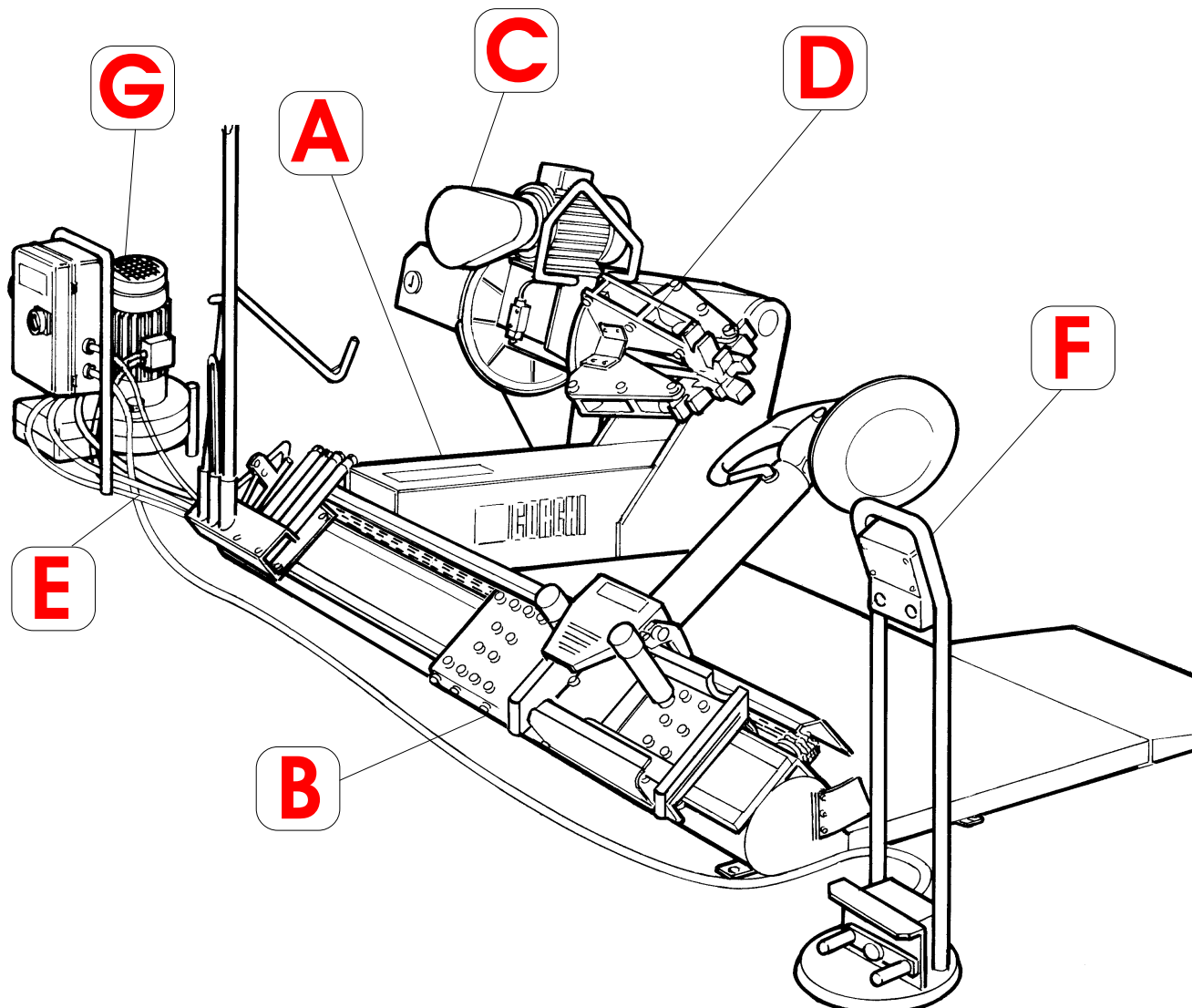


Questo libretto non autorizza l'utente ad intervenire sulle macchine ad esclusione di quanto esplicitamente descritto nel Manuale d'uso, ma consente all'utente di fornire informazioni precise all'Assistenza tecnica, al fine di ridurre i tempi di intervento.

HD 1200 E CL

The "Spare parts" booklet does not authorize the user to carry out work on the machine unless expressly specified in the instruction manual, but does enable him to provide accurate information to the assistance service in order to reduce downtime.

PEZZI DI RICAMBIO SPARE PARTS LIST ERSATZTEILLISTE PIECES DE RECHANGE



In produzione da
Production from
Herstellung ab
Production

05 / 99

Versione

3.0

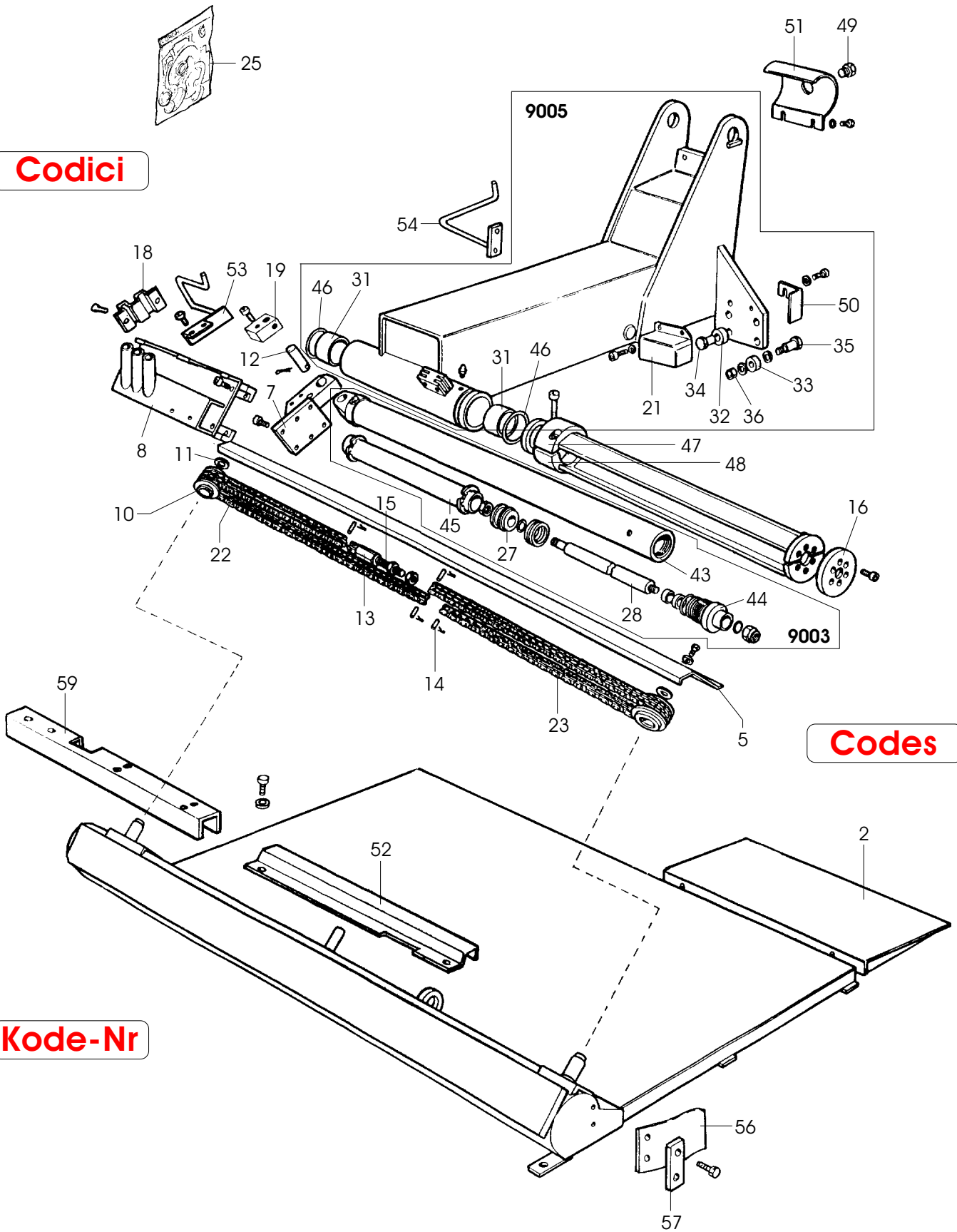
Der Katalog Ersatzteile stellt keine Genehmigung zu eigenmächtigen Eingriffen dar (mit Ausnahme jener im Handbuch beschriebenen), sondern er soll den Anwender in die Lage versetzen, dem technischen Service präzise Informationen zu liefern, um die Reparaturzeiten zu verkürzen.



Le livret "Pièces de rechange", n'autorise pas l'utilisateur à intervenir sur les machines, sauf pour tout ce qui est clairement décrit dans le manuel d'utilisation, mais lui permet de fournir des informations précises à l'assistance technique, afin de diminuer les délais d'intervention.

Codes

Codici



Codes

Kode-Nr

| | | | | | |
|------|-----------|---------------------|------------------|----------------------|-------------------|
| 0002 | 900238827 | RAMPA | RAMP | RAMPE | RAMPE |
| 0005 | 900338387 | CARTER | CASING | GEHAUSE | CARTER |
| 0007 | 900238545 | APPOGGIO | RIM SUPPORT | STUETZE | APPUI |
| 0008 | 900239282 | LAMIERA | METAL SHEET | BLECH | TOLE |
| 0010 | 900240982 | PULEGGIA | PULLEY | RIEMENSCHLEIBE | POULIE |
| 0011 | 900338712 | RONDELLA | WASHER | UNTERLEGSCHLEIBE | RONDELLE |
| 0012 | 900338732 | PERNO | PIN | ZAPFEN | PIVOT |
| 0013 | 900338733 | TENDITORE | TIGHTENER | SPANNER | TENDEUR |
| 0014 | 900339217 | PERNO | PIN | ZAPFEN | PIVOT |
| 0015 | 900339218 | BARRA | BAR | STANGE | BARRE |
| 0016 | 900339297 | ANELLO | RING | RING | ANNEAU |
| 0018 | 900244727 | FERMO | RETAINER | ANSCHLAG | ARRET |
| 0019 | 900340202 | BLOCCHETTO | BLOCK | BLOCK | BLOC |
| 0021 | 900438544 | CARENATURA | FAIRING | VERKLEIDUNG | CARENAGE |
| 0022 | 900439633 | CATENA | CHAIN | KETTE | CHAINE |
| 0023 | 900439634 | CATENA | CHAIN | KETTE | CHAINE |
| 0025 | 900242014 | KIT GUARNIZ. (9003) | SEALS KIT (9003) | DICHTUNGSSATZ (9003) | KIT JOINTS (9003) |

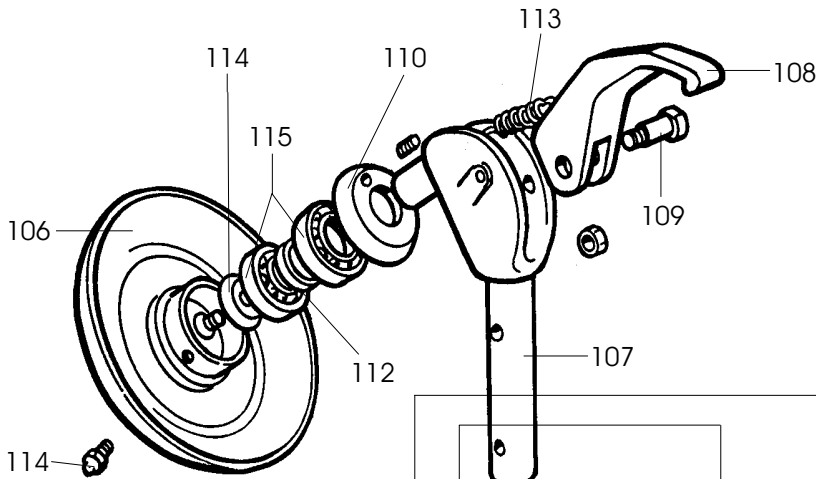
| | | | | | |
|-------------|-----------|-----------|----------|----------|----------|
| 9003 | 900242398 | CILINDRO | CYLINDER | ZYLINDER | CYLINDRE |
| 0027 | 900338682 | STANTUFFO | PISTON | KOLBEN | PISTON |
| 0028 | 900338683 | STELO | STEM | SCHAFT | TIGE |
| 0043 | 900242399 | CILINDRO | CYLINDER | ZYLINDER | CYLINDRE |
| 0044 | 900238686 | FLANGIA | FLANGE | FLANSCH | FLASQUE |
| 0045 | 900242401 | TUBO | PIPE | ROHR | TUYAU |

| | | | | | |
|-------------|-----------|-------------|---------|----------|----------|
| 9005 | 900245896 | BRACCIO | ARM | ARM | BRAS |
| 0031 | 900438762 | BOCCOLA | BUSHING | LAGER | DOUILLE |
| 0032 | 900338753 | ROTELLA | WHEEL | RAEDCHEN | ROULETTE |
| 0033 | 900338754 | ROTELLA | WHEEL | RAEDCHEN | ROULETTE |
| 0034 | 900338752 | PERNO | PIN | ZAPFEN | PIVOT |
| 0035 | 900601901 | VITE | SCREW | SCHRAUBE | VIS |
| 0036 | 900438756 | BOCCOLA | BUSHING | LAGER | DOUILLE |
| 0046 | 900442417 | GUARNIZIONE | SEAL | DICHTUNG | JOINT |

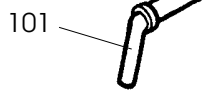
| | | | | | |
|------|-----------|----------------|----------|--------------|---------------|
| 0047 | 900242895 | TIRANTE | STAY ROD | ZUGSTANGE | TIRANT |
| 0048 | 900242896 | TIRANTE | STAY ROD | ZUGSTANGE | TIRANT |
| 0049 | 900435315 | TAPPO | PLUG | STOPFEN | BOUCHON |
| 0050 | 900342892 | RASCHIAPOLVERE | SCRAPER | SCHABER | RACLEPOUSIERE |
| 0051 | 900342409 | PROTEZIONE | SHIELD | ABDECKUNG | PROTECTION |
| 0052 | 900343022 | PROTEZIONE | SHIELD | ABDECKUNG | PROTECTION |
| 0053 | 900243881 | STAFFA | BRACKET | KLAUE | ETRIER |
| 0054 | 900245608 | SUPPORTO | SUPPORT | LAGER | SUPPORT |
| 0056 | 900342882 | GOMMA | GUM | GUMMI | CAOUTCHOUC |
| 0057 | 900341448 | TRAFILATO | DRAWN | GEZOGEN | TREFILE |
| 0058 | 900245608 | SUPPORTO | SUPPORT | LAGER | SUPPORT |
| 0059 | 900350065 | CAVALLOTTO | U-BOLT | BUEGELBOLZEN | CRAMPILLON |

9101

Codici



Kode-Nr



136

132

142

141

Codes

9104

138

134

133

125

127

135

120

131

140

143

146

144

118

145

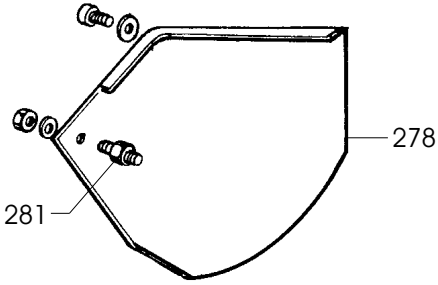
130

Codes

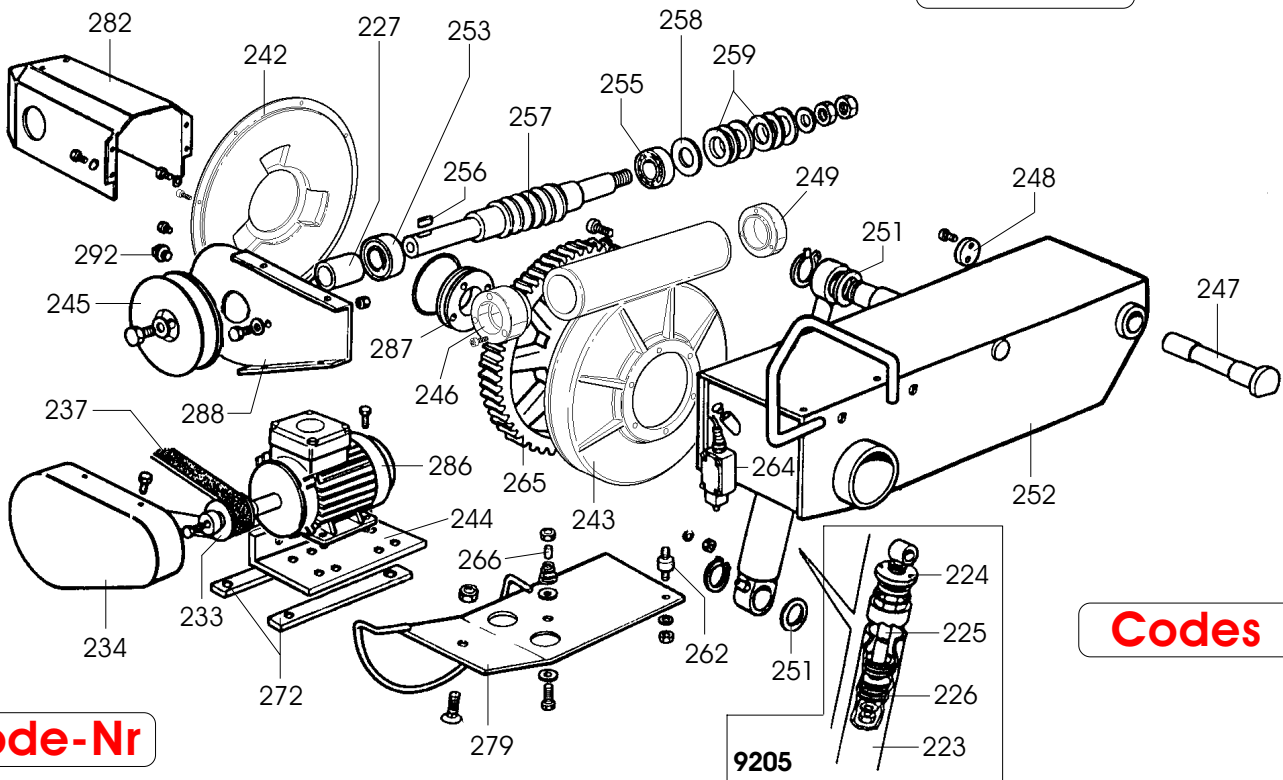
116

| | | | | | |
|-------------|-----------|--------------|---------------|-----------------|------------------|
| 0101 | 900238138 | FERMO | RETAINER | ANSCHLAG | ARRET |
| 9104 | 900246517 | CARRELLO | TROLLEY | WAGEN | CHARIOT |
| 0116 | 900438416 | GUARNIZIONE | SEAL | DICHTUNG | JOINT |
| 0118 | 900338417 | PATTINO | PAD | GLEITSTCHUH | PATIN |
| 0120 | 900442353 | BOCCOLA | BUSHING | LAGER | DOUILLE |
| 0125 | 900338461 | PERNO | PIN | ZAPFEN | PIVOT |
| 0127 | 900338463 | BOCCOLA | BUSHING | LAGER | DOUILLE |
| 0130 | 900342356 | TIRANTE | STAY ROD | ZUGSTANGE | TIRANT |
| 0131 | 900442380 | INGRASSATORE | LUBRICATOR | SCHMIERNIPPEL | GRAISSEUR |
| 0132 | 900243748 | BRACCIO | ARM | ARM | BRAS |
| 0133 | 900443754 | MOLLA | SPRING | FEDER | RESSORT |
| 0134 | 900343753 | CRICCHETTO | CRICK | SPERRKLINKE | CLIQUET |
| 0135 | 900343755 | PEDALE | PEDAL | PEDAL | PEDALE |
| 0136 | 900601172 | VITE | SCREW | SCHRAUBE | VIS |
| 0138 | 900443756 | CAPPUCCIO | CAP | KAPUZE | CAPUCHON |
| 0140 | 900439580 | INGRASSATORE | LUBRICATOR | SCHMIERNIPPEL | GRAISSEUR |
| 0141 | 900243751 | FODERO | SPRING SHEATH | FEDER HUELSE | FOURREAU RESSORT |
| 0142 | 900437519 | MOLLA | SPRING | FEDER | RESSORT |
| 9101 | 900236486 | UTENSILE | TOOL | WERKZEUG | OUTIL |
| 0106 | 900236453 | DISCO | DISK | SCHEIBE | DISQUE |
| 0107 | 900236485 | SUPPORTO | SUPPORT | LAGER | SUPPORT |
| 0108 | 900237503 | UTENSILE | TOOL | WERKZEUG | OUTIL |
| 0109 | 900336480 | FULCRO | FULCRUM | DREHPUNKT | ENTABLURE |
| 0110 | 900337002 | GHIERA | NUT | NUTMUTTER | BAGUE |
| 0111 | 900337003 | RONDELLA | WASHER | UNTERLEGSCHIEBE | RONDELLE |
| 0112 | 900337004 | DISTANZIALE | SPACER | ABSTANDSSTUECK | ENTRETOISE |
| 0113 | 900421596 | MOLLA | SPRING | FEDER | RESSORT |
| 0114 | 900429406 | INGRASSATORE | LUBRICATOR | SCHMIERNIPPEL | GRAISSEUR |
| 0115 | 900601831 | CUSCINETTO | BEARING | LAGER | ROULEMENT |

Codici

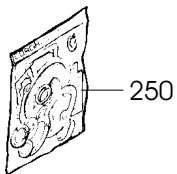


Codes

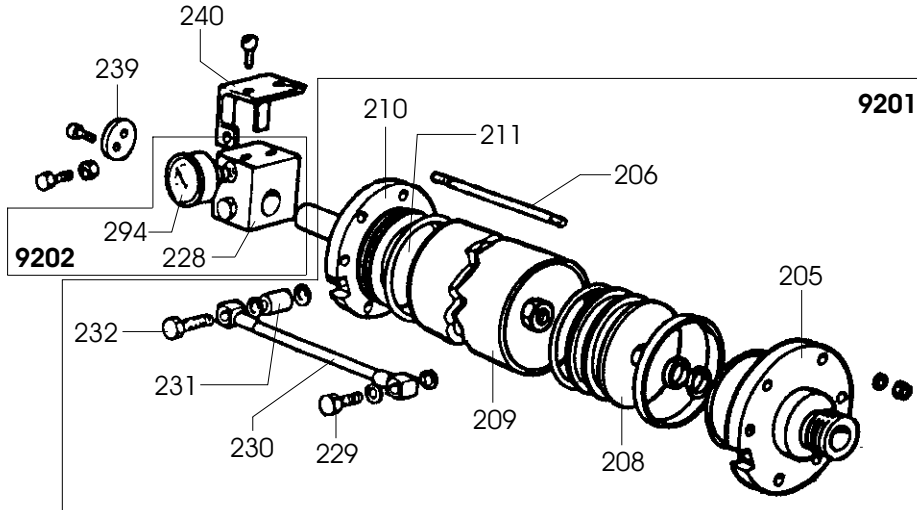


Codes

Kode-Nr

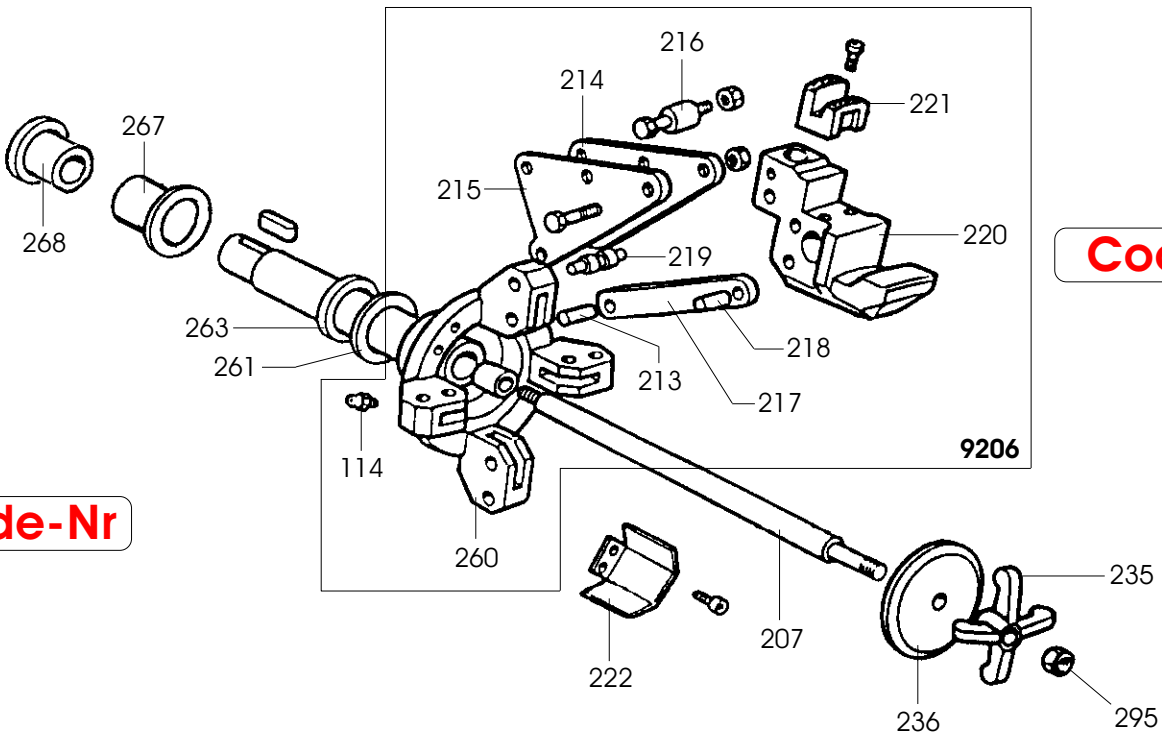
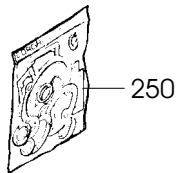


| | | | | | |
|-------------|-----------|---------------------|------------------|---------------------|-------------------|
| 9205 | 900242920 | CILINDRO Ø70 | CYLINDER | ZYLINDER | CYLINDRE |
| 0223 | 900238606 | CILINDRO | CYLINDER | ZYLINDER | CYLINDRE |
| 0224 | 900238611 | FLANGIA | FLANGE | FLANSCH | FLASQUE |
| 0225 | 900238613 | STELO | STEM | SCHAFT | TIGE |
| 0226 | 900238616 | STANTUFFO | PISTON | KOLBEN | PISTON |
| | | | | | |
| 0227 | 900354881 | DISTANZIALE | SPACER | ABSTANDSSTUECK | ENTRETOISE |
| 0233 | 900355892 | PULEGGIA | PULLEY | RIEMENSCHLEIBE | POULIE |
| 0234 | 900455891 | CARTER | CASING | GEHAUSE | CARTER |
| 0237 | 900455894 | CINGHIA 50HZ | BELT 50HZ | RIEMEN 50HZ | COURROIE 50HZ |
| 0237 | 900455897 | CINGHIA 60HZ | BELT 60HZ | RIEMEN 60HZ | COURROIE 60HZ |
| 0242 | 900354213 | COPERCHIO | LID | DECKEL | COUVERCLE |
| 0243 | 900354212 | SCATOLA | BOX | SCHACHTEL | BOITE |
| 0244 | 900355937 | FLANGIA | FLANGE | FLANSCH | FLASQUE |
| 0245 | 900355893 | PULEGGIA | PULLEY | RIEMENSCHLEIBE | POULIE |
| 0246 | 900354876 | TAPPO | PLUG | BOUCHON | STOPFEN |
| 0247 | 900341680 | PERNO | PIN | ZAPFEN | PIVOT |
| 0248 | 900341681 | RONDELLA | WASHER | UNTERLEGSCHLEIBE | RONDELLE |
| 0249 | 900354875 | TAPPO | PLUG | BOUCHON | STOPFEN |
| 0250 | 900242013 | KIT GUARNIZ. (9205) | SEALS KIT (9205) | DICHTUNGSATZ (9205) | KIT JOINTS (9205) |
| 0251 | 900338751 | RONDELLA | WASHER | UNTERLEGSCHLEIBE | RONDELLE |
| 0252 | 900255173 | BRACCIO | ARM | ARM | BRAS |
| 0253 | 900602213 | CUSCINETTO | BEARING | LAGER | ROULEMENT |
| 0255 | 900601034 | CUSCINETTO | BEARING | LAGER | ROULEMENT |
| 0256 | 900600716 | LINGUETTA | TANG | FEDERKEIL | LANGUETTE |
| 0257 | 900317275 | VITE | SCREW | SCHRAUBE | VIS |
| 0258 | 900317281 | RONDELLA | WASHER | UNTERLEGSCHLEIBE | RONDELLE |
| 0259 | 900601035 | CUSCINETTO | BEARING | LAGER | ROULEMENT |
| 0262 | 900443794 | ANTIVIBRANTE | VIBRATION DAM. | SCHWINGUNGSDAEMPFER | ANTI-VIBRATION |
| 0264 | 900422041 | INTERRUPTORE | SWITCH | SCHALTER | INTERRUPTEUR |
| 0265 | 900341541 | RUOTA | WHEEL | RAD | ROUE |
| 0266 | 900344485 | DISTANZIALE | SPACER | ABSTANDSSTUECK | ENTRETOISE |
| 0272 | 900340985 | SUPPORTO | SUPPORT | LAGER | SUPPORT |
| 0278 | 900445813 | PROTEZIONE | SHIELD | ABDECKUNG | PROTECTION |
| 0279 | 900245621 | SUPPORTO | SUPPORT | LAGER | SUPPORT |
| 0281 | 900345814 | VITE | SCREW | SCHRAUBE | VIS |
| 0282 | 900253346 | CARTER | CASING | GEHAUSE | CARTER |
| 0286 | 900453001 | MOTORE 380/3/50 | MOTOR 380/3/50 | MOTOR 380/3/50 | MOTEUR 380/3/50 |
| 0286 | 900453003 | MOTORE 220/3/50 | MOTOR 220/3/50 | MOTOR 220/3/50 | MOTEUR 220/3/50 |
| 0286 | 900453002 | MOTORE 220/3/60 | MOTOR 220/3/60 | MOTOR 220/3/60 | MOTEUR 220/3/60 |
| 0287 | 900353343 | FLANGIA | FLANGE | FLANSCH | FLASQUE |
| 0288 | 900353245 | CARTER | CASING | GEHAUSE | CARTER |
| 0292 | 900447643 | INDICATORE | STATUS LIGHT | ANZEIGER | INDICATEUR |



Codes

Codici



Codes

Kode-Nr

| 9201 | 900239119 | CILINDRO Ø120 | CYLINDER | ZYLINDER | CYLINDRE |
|-------------|------------------|----------------------|-----------------|-----------------|-----------------|
| 0205 | 900239118 | FLANGIA | FLANGE | FLANSCH | FLASQUE |
| 0206 | 900334204 | TIRANTE | STAY ROD | ZUGSTANGE | TIRANT |
| 0207 | 900338599 | STELO | STEM | SCHAFT | TIGE |
| 0208 | 900338604 | STANTUFFO | PISTON | KOLBEN | PISTON |
| 0209 | 900338710 | CILINDRO | CYLINDER | ZYLINDER | CYLINDRE |
| 0210 | 900338777 | FLANGIA | FLANGE | FLANSCH | FLASQUE |
| 0211 | 900440357 | TAPPO | PLUG | STOPFEN | BOUCHON |
| 0229 | 900322489 | PERNO | PIN | ZAPFEN | PIVOT |
| 0230 | 900434426 | TUBO | PIPE | ROHR | TUYAU |
| 0231 | 900335283 | PROLUNGA | EXTENSION CORD | VERLAENGERUNG | RALLONGE |
| 0232 | 900335284 | VITE | SCREW | SCHRAUBE | VIS |

| 9206 | 900255538 | AUTOCENTRANTE | TURNTABLE | SPANNFUTTER | PLATEAU AUTOCENT. |
|-------------|------------------|----------------------|------------------|--------------------|--------------------------|
| 0114 | 900429406 | INGRASSATORE | LUBRICATOR | SCHMIERNIPPEL | GRAISSEUR |
| 0213 | 900321564 | SPINOTTO | GUDGEON | KOLBENBOLZEN | GOUJON |
| 0214 | 900334156 | PIASTRA | SLAB | PLATTE | PLAQUE |
| 0215 | 900334157 | PIASTRA | SLAB | PLATTE | PLAQUE |
| 0216 | 900334160 | DISTANZIALE | SPACER | ABSTANDSSTUECK | ENTRETOISE |
| 0217 | 900334163 | BIELLA | TRACE | PLEUELSTANGE | BIELLE |
| 0218 | 900334164 | SPINOTTO | GUDGEON | KOLBENBOLZEN | GOUJON |
| 0219 | 900334170 | RULLO | ROLLER | WALZE | ROULEAU |
| 0220 | 900334201 | SUPPORTO | SUPPORT | LAGER | SUPPORT |
| 0221 | 900421556 | GRIFFA | JAW | BACKE | MORS |
| 0260 | 900354329 | MANDRINO | SPINDLE | SPINDEL | MANDRIN |

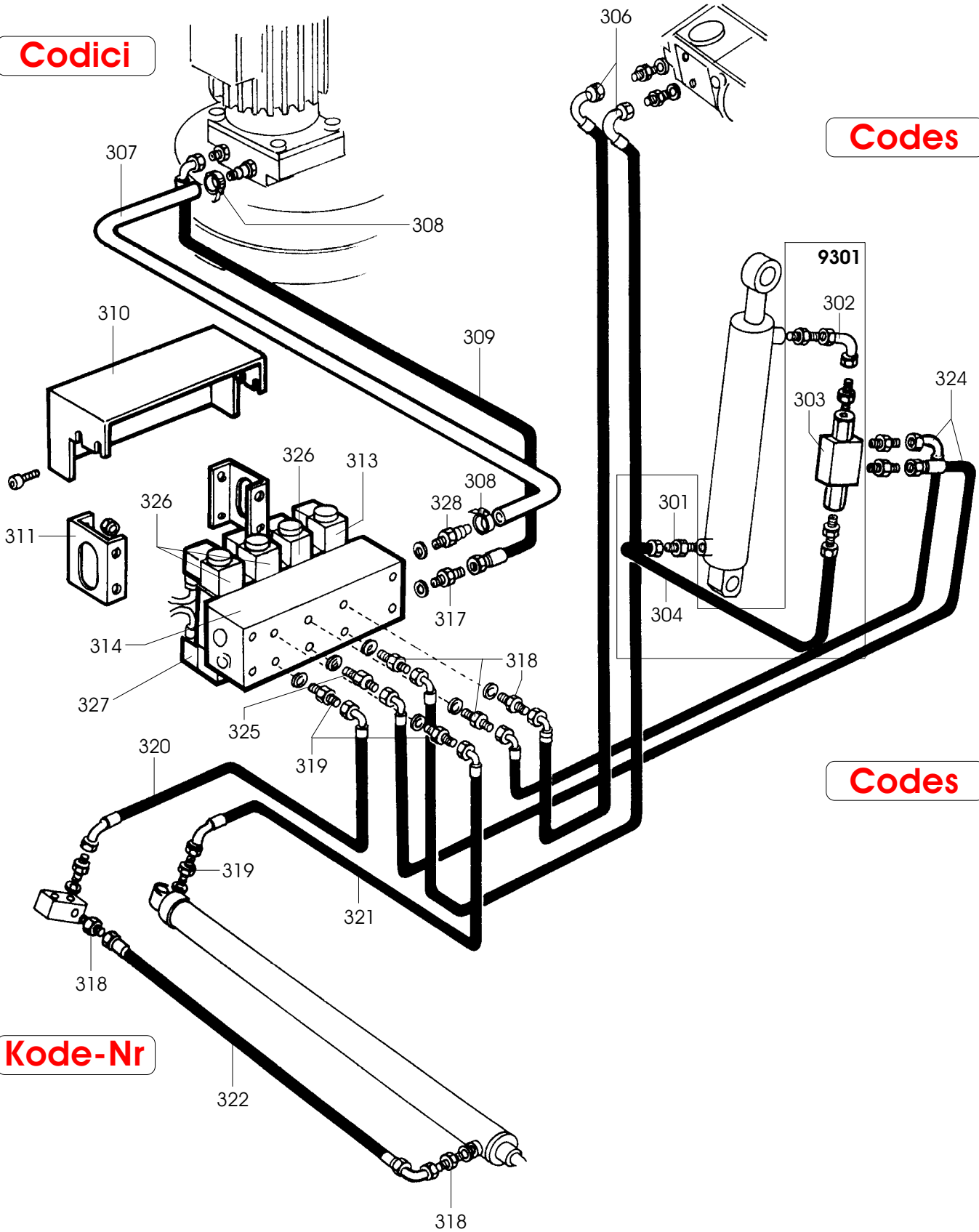
| | | | | | |
|------|-----------|--------|--------|---------|--------|
| 0222 | 900341289 | CARTER | CASING | GEHAUSE | CARTER |
|------|-----------|--------|--------|---------|--------|

| 9202 | 900239596 | DISTRIBUTORE | DISTRIBUTOR | VERTEILER | DISTRIBUTEUR |
|-------------|------------------|---------------------|--------------------|------------------|---------------------|
| 0228 | 900440387 | DISTRIBUTORE | DISTRIBUTOR | VERTEILER | DISTRIBUTEUR |
| 0294 | 900441979 | MANOMETRO | PRESSURE GAUGE | DRUCKMESSER | MANOMETRE |

| | | | | | |
|------|-----------|---------------------|------------------|---------------------|---------------------|
| 0235 | 900338600 | CROCE | CROSS | KREUZ | CROIX |
| 0236 | 900338601 | DISCO | DISK | SCHEIBE | DISQUE |
| 0239 | 900338778 | RONDELLA | WASHER | UNTERLEGSCHIEBE | RONDELLE |
| 0240 | 900339538 | FERMO | RETAINER | ANSCHLAG | ARRET |
| 0250 | 900242012 | KIT GUARNIZ. (9201) | SEALS KIT (9201) | DICHTUNGSATZ (9201) | KIT JOINTS (9201) |
| 0261 | 900355174 | ANELLO | RING | RING | ANNEAU |
| 0263 | 900354976 | RONDELLA | WASHER | UNTERLEGSCHIEBE | RONDELLE |
| 0267 | 900355175 | BRONZINA | BRASS | LAGERBUCHSE | COUSSINET EN BRONZE |
| 0268 | 900453344 | BRONZINA | BRASS | LAGERBUCHSE | COUSSINET EN BRONZE |
| 0295 | 900691674 | DADO | NUT | MUTTER | ECROU |

Codici

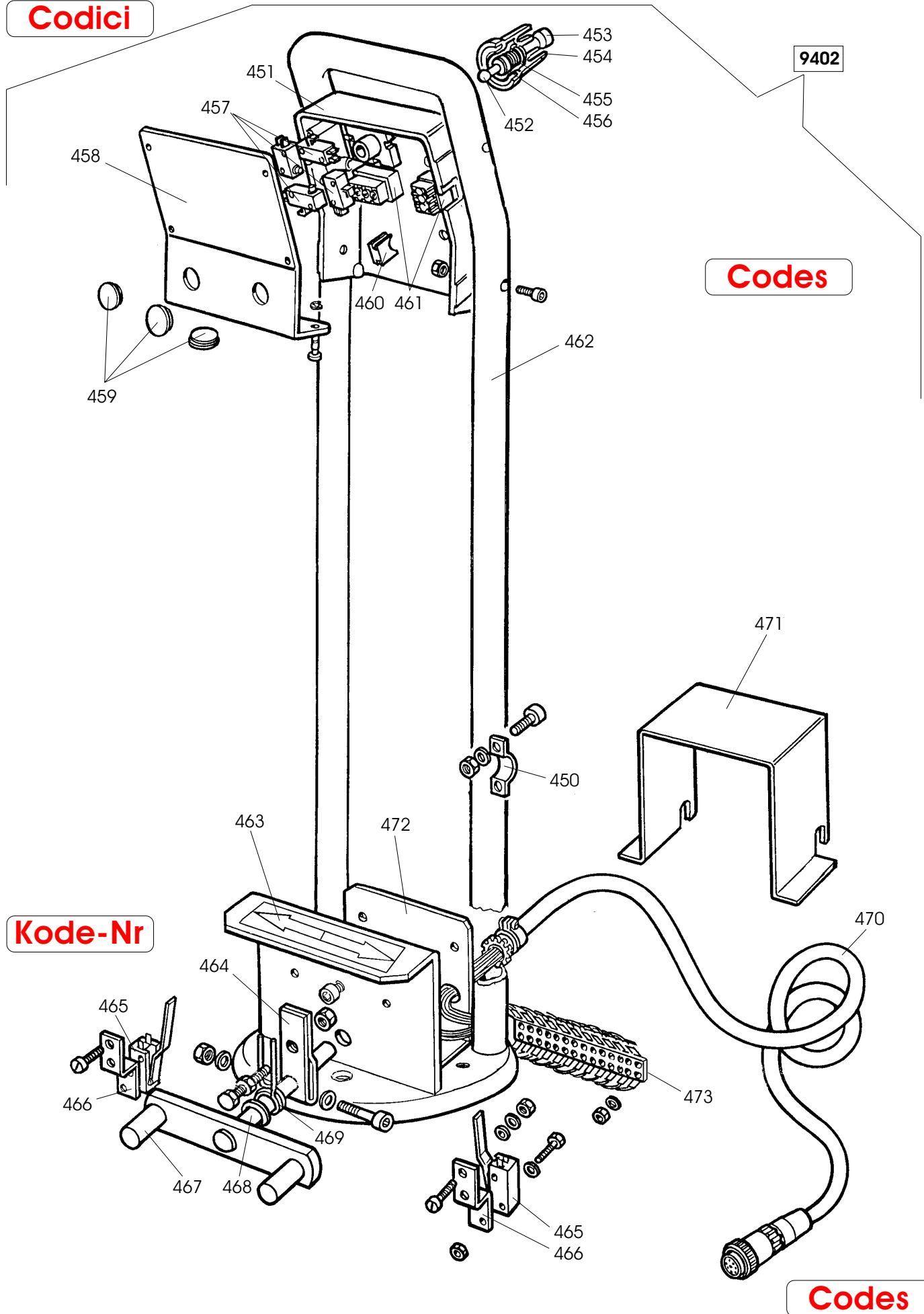
Codes



Codes

Kode-Nr

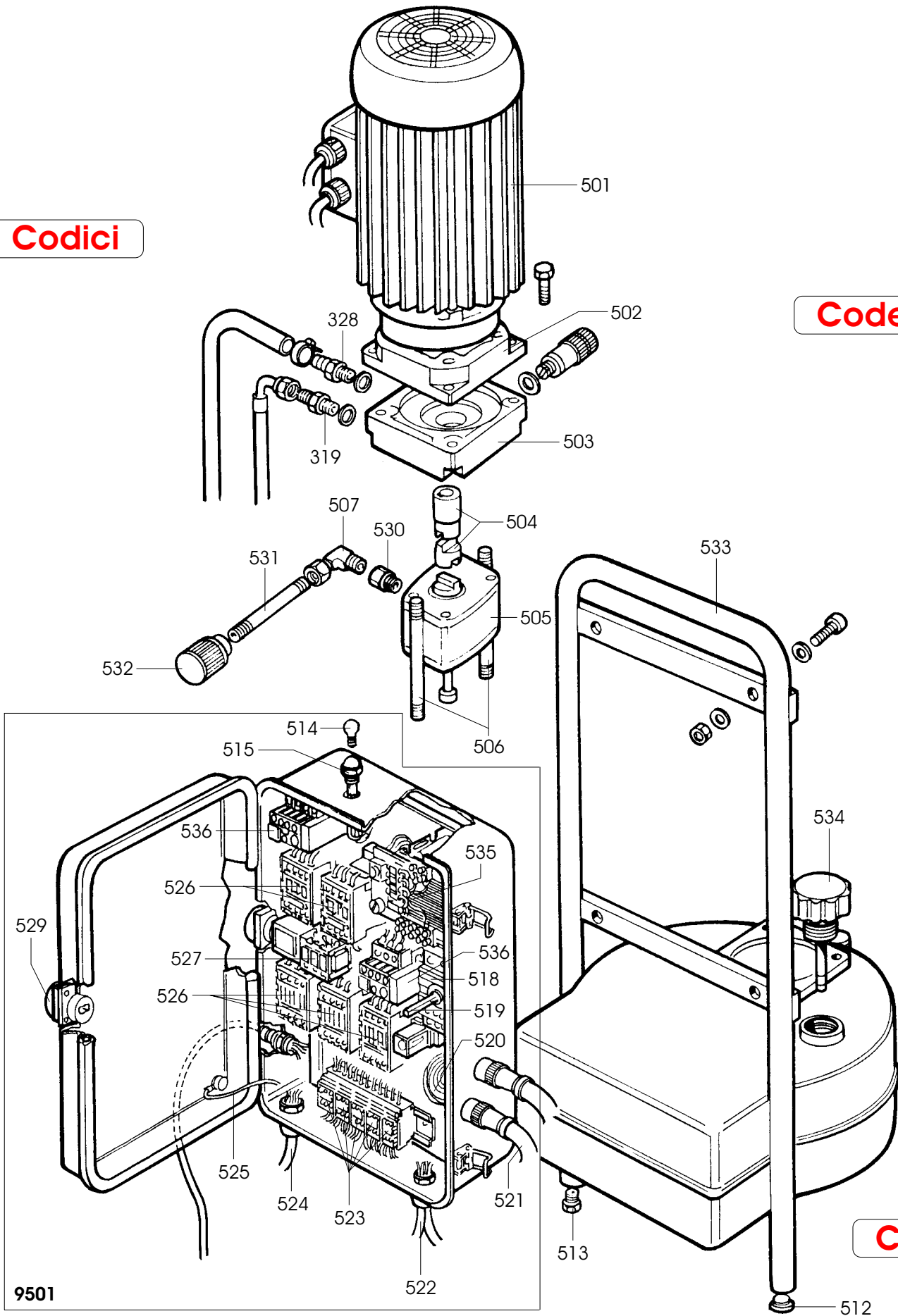
| | | | | | |
|-------------|-----------|----------------|----------------|-----------------|--------------------|
| 9301 | 900243157 | VALVOLA | VALVE | VENTIL | VANNE |
| 0301 | 900442919 | RACCORDO | CONNECTOR | ANSCHLUSS | RACCORD |
| 0302 | 900443535 | RACCORDO | CONNECTOR | ANSCHLUSS | RACCORD |
| 0303 | 900242911 | VALVOLA | VALVE | VENTIL | VANNE |
| 0304 | 900342923 | TUBO | PIPE | ROHR | TUYAU |
| 0306 | 900440763 | TUBO | PIPE | ROHR | TUYAU |
| 0307 | 900444461 | TUBO | PIPE | ROHR | TUYAU |
| 0308 | 900440793 | FASCETTA | STRAP | SCHLAUCHSCHELLE | COLLIER |
| 0309 | 900444462 | TUBO | PIPE | ROHR | TUYAU |
| 0310 | 900343865 | COPERCHIO | LID | DECKEL | COUVERCLE |
| 0311 | 900343864 | STAFFA | BRACKET | KLAUE | ETRIER |
| 0313 | 900444452 | ELETTROVALVOLA | SOLENOID VALVE | MAGNETVENTIL | SOUPAPE ELECTRIQUE |
| 0314 | 900444451 | PIASTRA | SLAB | PLATTE | PLAQUE |
| 0317 | 900437678 | NIPPLO | CONNECTION | NIPPEL | NIPPLE |
| 0318 | 900417627 | ADATTATORE | ADAPTER | ADAPTER | ADAPTATEUR |
| 0319 | 900417628 | ADATTATORE | ADAPTER | ADAPTER | ADAPTATEUR |
| 0320 | 900440766 | TUBO | PIPE | ROHR | TUYAU |
| 0321 | 900440767 | TUBO | PIPE | ROHR | TUYAU |
| 0322 | 900442461 | TUBO | PIPE | ROHR | TUYAU |
| 0324 | 900440764 | TUBO | PIPE | ROHR | TUYAU |
| 0325 | 900444460 | NIPPLO | CONNECTION | NIPPEL | NIPPLE |
| 0326 | 900442303 | ELETTROVALVOLA | SOLENOID VALVE | MAGNETVENTIL | SOUPAPE ELECTRIQUE |
| 0327 | 900449088 | BOBINA | COIL | SPULE | BOBINE |
| 0328 | 900425260 | RACCORDO | CONNECTOR | ANSCHLUSS | RACCORD |

Codici**Codes****Kode-Nr****Codes**

| 9402 | 900255623 | MANIPOLATORE | MANIPULATOR | MANIPULATOR | MANIPULATEUR |
|------|-----------|------------------|-------------|-----------------|-----------------|
| 0450 | 900338372 | FASCETTA | STRAP | SCHLAUCHSCHELLE | COLLIER |
| 0451 | 900255791 | SUPPORTO | SUPPORT | LAGER | SUPPORT |
| 0452 | 900339000 | LEVA | LEVER | HEBEL | LEVIER |
| 0453 | 900355781 | POMOLO | KNOB | BALLENGRIFF | POMMEAU |
| 0454 | 900435301 | PROTEZIONE | SHIELD | ABDECKUNG | PROTECTION |
| 0455 | 900439697 | MOLLA | SPRING | FEDER | RESSORT |
| 0456 | 900339002 | GUIDA | GUIDE | FUEHRUNG | GLISSIERE |
| 0457 | 900454405 | MICROINTERRUTT. | MICROSWITCH | MIKROSCHALTER | MICROINTERRUPT. |
| 0458 | 900355779 | COPERCHIO | LID | DECKEL | COUVERCLE |
| 0459 | 950456036 | TAPPO | PLUG | STOPFEN | BOUCHON |
| 0460 | 900441518 | PROTEZIONE | SHIELD | ABDECKUNG | PROTECTION |
| 0461 | 900439569 | INTERRUTTORE | SWITCH | SCHALTER | INTERRUPTEUR |
| 0462 | 900255783 | PEDALE | PEDAL | PEDAL | PEDALE |
| 0463 | 900421502 | TARGHETTA | DATA PLATE | TYPENSCHILD | PLAQUETTE |
| 0464 | 900317491 | LEVA | LEVER | HEBEL | LEVIER |
| 0465 | 900440874 | MICROINTERRUTT. | MICROSWITCH | MIKROSCHALTER | MICROINTERRUPT. |
| 0466 | 900355786 | STAFFA | BRACKET | KLAUE | ETRIER |
| 0467 | 900217479 | PEDALE | PEDAL | PEDAL | PEDALE |
| 0468 | 900325050 | DISTANZIALE | SPACER | ABSTANDSSTUECK | ENTRETOISE |
| 0469 | 900401270 | MOLLA | SPRING | FEDER | RESSORT |
| 0470 | 900255627 | CAVO | CABLE | KABEL | CABLE |
| 0471 | 900355788 | CARTER | CASING | GEHAUSE | CARTER |
| 0472 | 900355799 | SUPPORTO | SUPPORT | LAGER | SUPPORT |
| 0473 | 900455626 | SCHEDA ELETTRON. | P.C.BOARD | ELEKTR.PLATINE | FICHE ELECTR. |

Codici

Codes



Codes

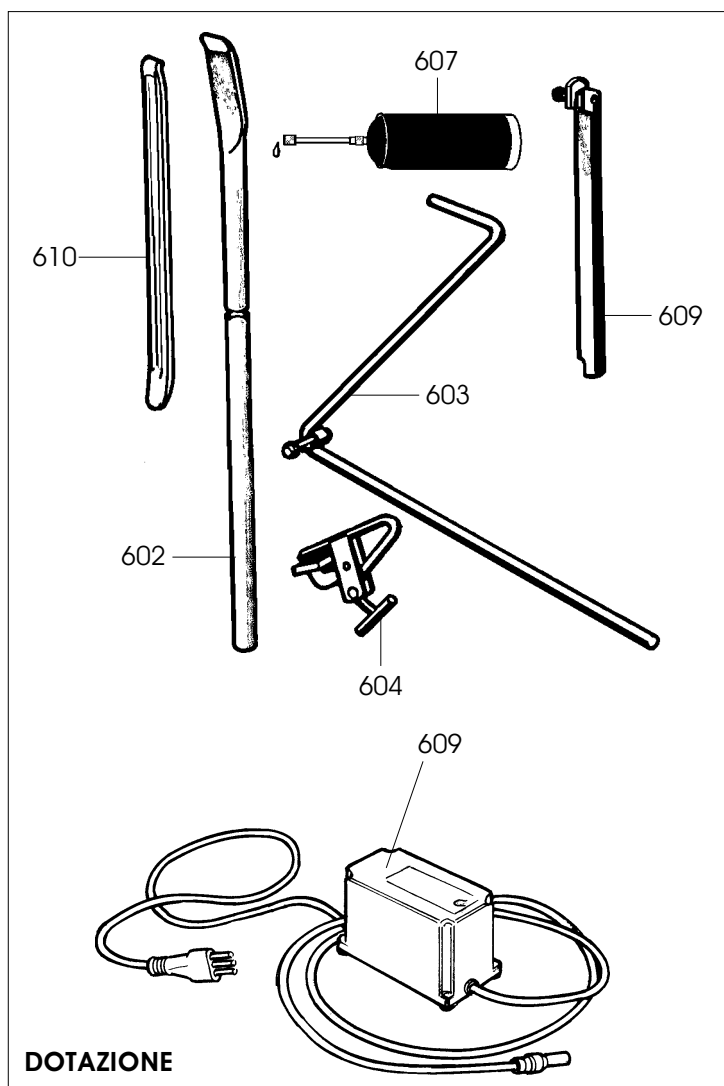
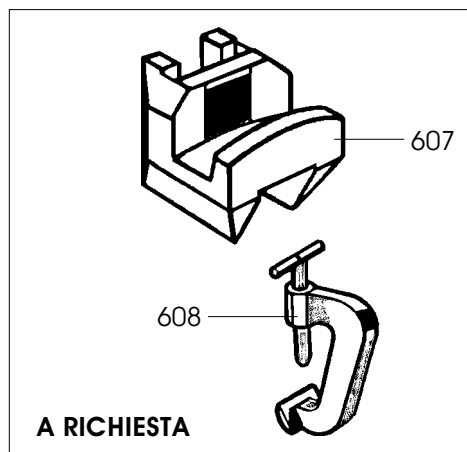
Kode-Nr

9501

| | | | | | |
|------|-----------|-----------------|----------------|----------------|-----------------|
| 0319 | 900417628 | ADATTATORE | ADAPTER | ADAPTER | ADAPTATEUR |
| 0328 | 900425260 | RACCORDO | CONNECTOR | ANSCHLUSS | RACCORD |
| 0501 | 900444453 | MOTORE 380/3/50 | MOTOR 380/3/50 | MOTOR 380/3/50 | MOTEUR 380/3/50 |
| 0501 | 900445570 | MOTORE 220/3/60 | MOTOR 220/3/60 | MOTOR 220/3/60 | MOTEUR 220/3/60 |
| 0501 | 900445670 | MOTORE 220/3/50 | MOTOR 220/3/50 | MOTOR 220/3/50 | MOTEUR 220/3/50 |
| 0502 | 900444447 | FLANGIA | FLANGE | FLANSCH | FLASQUE |
| 0503 | 900444445 | FLANGIA | FLANGE | FLANSCH | FLASQUE |
| 0504 | 900444448 | GIUNTO | COUPLING | KUPPLUNG | ACCOUPLLEMENT |
| 0505 | 900435366 | POMPA 50HZ | PUMP 50HZ | PUMPE 50HZ | POMPE 50HZ |
| 0505 | 900435375 | POMPA 60HZ | PUMP 60HZ | PUMPE 60HZ | POMPE 60HZ |
| 0506 | 900444449 | TUBO | PIPE | ROHR | TUYAU |
| 0507 | 900424558 | RACCORDO | CONNECTOR | ANSCHLUSS | RACCORD |
| 0512 | 900441354 | PIEDE | FOOT | FUSS | PIED |
| 0513 | 900437642 | TAPPO | PLUG | STOPFEN | BOUCHON |

| | | | | | |
|-------------|-----------|--------------------------|-------------------------|----------------------------|------------------------------|
| 9501 | 900243854 | IMP. ELETTR. 380/3/50 | ELECTRIC S. 380/3/50 | ELEKTRISCHE A. 380/3/50 | INSTALL. ELECTR. 380/3/50 |
| 9501 | 900245673 | IMP. ELETTR. 220/3/50-60 | ELECTRIC S. 220/3/50-60 | ELEKTRISCHE A. 220/3/50-60 | INSTALL. ELECTR. 220/3/50-60 |
| 0514 | 950415012 | LAMPADA | LAMP | LAMPE | LAMPE |
| 0515 | 900422040 | SPIA | PILOT LAMP | KONTROLLEUCHTE | TEMOIN |
| 0518 | 900439750 | COMMUTATORE | COMMUTATOR | SCHALTER | COMMUTATEUR |
| 0519 | 900439748 | PROLUNGA | EXTENSION CORD | VERLAENGERUNG | RALLONGE |
| 0520 | 900244436 | CAVO | CABLE | KABEL | CABLE |
| 0521 | 900244441 | CAVO | CABLE | KABEL | CABLE |
| 0522 | 900244463 | CAVO | CABLE | KABEL | CABLE |
| 0523 | 900443459 | MORSETTO | TERMINAL | KLEMME | BORNE |
| 0523 | 900443460 | MORSETTO | TERMINAL | KLEMME | BORNE |
| 0524 | 900244464 | CAVO | CABLE | KABEL | CABLE |
| 0525 | 900240912 | CAVO | CABLE | KABEL | CABLE |
| 0526 | 900421469 | TELERUTTORE | REMOTE SWITCH | FERNASCHALTER | TELERUPTEUR |
| 0527 | 900443462 | RELE | RELAY | RELAIS | RELAIS |
| 0529 | 900444306 | COMMUTATORE | COMMUTATOR | SCHALTER | COMMUTATEUR |
| 0535 | 900446520 | TRASFORMATORE | TRANSFORMER | TRANSFORMATOR | TRANSFORMATEUR |
| 0536 | 900444308 | RELE 220/3/50-60 | RELAY 220/3/50-60 | RELAIS 220/3/50-60 | RELAIS 220/3/50-60 |
| 0536 | 900444320 | RELE 380/3/50 | RELAY 380/3/50 | RELAIS 380/3/50 | RELAIS 380/3/50 |

| | | | | | |
|------|-----------|----------------|----------------|----------------|----------------|
| 0530 | 900445683 | RIDUZIONE 60HZ | REDUCTION 60HZ | REDUKTION 60HZ | REDUCTION 60HZ |
| 0531 | 900451494 | TUBO | PIPE | ROHR | TUYAU |
| 0532 | 900451493 | FILTRO | FILTER | FILTER | FILTRE |
| 0533 | 900249970 | SUPPORTO | SUPPORT | LAGER | SUPPORT |
| 0534 | 900449976 | TAPPO | PLUG | STOPFEN | BOUCHON |


DOTAZIONE

A RICHIESTA

| | DOTAZIONE | OUTFIT | LIEFERUMFANG | LIVRES D'ORIGINE |
|------|--------------------------|------------------|---------------------|-------------------------|
| 0602 | 900236906 LEVA | LEVER | HEBEL | LEVIER |
| 0603 | 900217617 LEVA | LEVER | HEBEL | LEVIER |
| 0604 | 900219244 PINZA | PLIERS | ZANGE | PINCE |
| 0606 | 900435443 INGRASSATORE | LUBRICATOR | SCHMIERNIPPEL | GRAISSEUR |
| 0609 | 900240205 STELO | STEM | SCHAFT | TIGE |
| 0610 | 900426388 LEVA | LEVER | HEBEL | LEVIER |
| 0609 | 900240674 CARICABATTERIE | BATTERY CHARG. | BATTERIELADEGERAET | CHARG. DE BATTERIE |
| | A RICHIESTA | OPTIONALS | AUF WUNSCH | EN OPTION |
| 0607 | 900239975 GRIFFA | JAW | BACKE | MORS |
| 0608 | 900217635 MORSETTO | TERMINAL | KLEMME | BORNE |

Il disegno è realizzato con tutti i particolari ma solo quelli codificati sono forniti come ricambi. L'Azienda si riserva la facoltà di apportare modifiche senza preavviso.